

# Warranty Guide & Environmental Categories





LOCAL FOCUS.  
GLOBAL QUALITY.

[unisteel.co.nz](https://unisteel.co.nz)



For over 20 years, UniSteel has been providing high-performance steel products made to thrive in New Zealand's diverse and demanding conditions. From snow-dusted high country to salt-laced coastlines, our steel is built to endure — and designed to belong.

Our wide range of colours draw from the natural palette of Aotearoa. Whether you're after bold contrast or a softer blend with the land, we make it easy to find the perfect finish to complement your build and your environment.

Our deep connections with trusted international mills give you access to the latest innovations in steel, while our local knowledge ensures every solution is fit for purpose here at home.

At UniSteel, we combine global capability with Kiwi practicality. We understand that steel is more than a structure, it helps create homes, lifestyles, and lasting memories - shaping the spaces where New Zealand families thrive.



Zenium®

ColorZen®

UltraZen®



# Environmental Categories

When it comes to roofing and cladding, selecting the right Unisteel® pre-painted steel system for your location is essential. This is vital in areas of New Zealand that are more prone to corrosion due to environmental factors like airborne contaminants, geothermal activity, and industrial emissions. Different environments place different demands on building materials, and making the right choice from the start helps ensure your roof performs, protects, and maintains its appearance for years to come.

Unisteel® offers a range of systems specifically developed to suit these varied conditions, helping to reduce maintenance, maximise durability, and preserve the long-term integrity of your building.



Use this chart as a reference only.

VERY SEVERE MARINE	SEVERE MARINE	MODERATE	MILD
Heavy salt deposits	Light salt deposits	Little or no salt deposits	No salt deposits
The almost constant smell of salt spray in the air	A frequent smell of salt in the air	The occasional smell of salt in the air	No smell of salt in the air
Typically starts 30 meters from the high-water mark on the east coast and 60m from the high-water mark on the west coast	Typically starts 500 meters from breaking surf	Typically starts 1000 meters from breaking surf	5000 meters from breaking surf, such as found on exposed coasts and greater than 1000 meters from calm saltwater bodies such as estuaries.
Close to breaking surf	In the immediate vicinity of large expanses of calm salt water such as harbour's	In the immediate vicinity of calm saltwater such as estuaries	
This environment may be extended inland by prevailing winds & local conditions	This environment may be extended inland by prevailing winds & local conditions		

UltraZen®

ColorZen®

Zenium®

Design, positioning, and other factors may influence the best product for your needs.  
For personalised recommendations, contact UniSteel®. Warranty inquiries can be sent to [warranty@unisteel.co.nz](mailto:warranty@unisteel.co.nz).







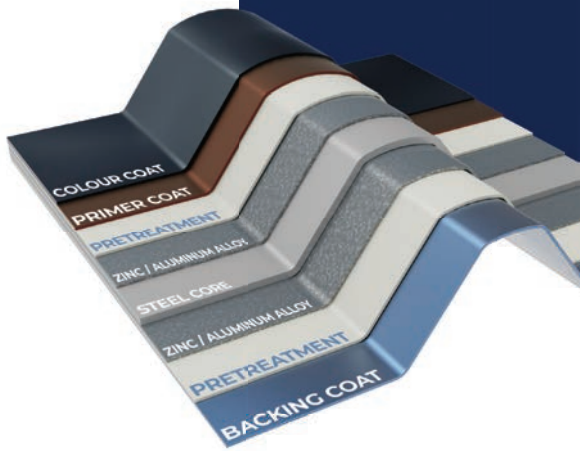
# ColorZen®

**ColorZen®** provides an attractive and durable range of colour choices. Featuring a high tensile base with a minimum 150gsm coating of zinc aluminium, layers are added of pre-treatment, primer and a final colour coat using advanced paint technology. Produced by one of the best steel mills in the world, the quality of finish is superlative.

Category		ColorZen (AZ150)		
		Residential & Commercial		
		Perforation	Paint	Maintenance
Mild ISO C1-2	Roof	30 Years	18 Years	Rain Washing
	Wall Cladding	15 Years	15 Years	Manual washing every 12 months
	Accessories	15 Years	10 Years	Manual washing every 6 months
Moderate ISO C3	Roof	30 Years	18 Years	Rain Washing
	Wall Cladding	15 Years	15 Years	Manual washing every 12 months
	Accessories	15 Years	10 Years	Manual washing every 6 months
Severe ISO C4	Roof	15 Years	15 Years	Rain Washing
	Wall Cladding	N/R	N/R	N/A
	Accessories	10 Years	5 Years	Manual washing every 3 months
Very Severe		Not recommended in this environment		

**Technical:**  
UniSteel® ColorZen® conforms to AS/NZS2782:2013.  
Suitable for ISO9223:2012 Atmospheric Classifications C1 to C3, and for Roofing (not wall cladding) in C4.  
Refer to UniSteel® Warranty & Maintenance Guide for full details.

**Substrate:**  
Hot dipped 55% aluminium/zinc alloy coated steel coil.  
AZ150 coating with 150 g/m2 coating weight.  
Manufactured to AS1397:2011.



**Pre-treatment:**  
Corrosion resistant conversion coating.

**Primer:**  
Corrosion resistant epoxy/polyester primer. 5-micron nominal film thickness.

**Finish Coat:**  
Flexible exterior Super Advanced Durable Polyester coating. 20-micron nominal film thickness.

**Backing Coat:**  
Standard grey epoxy service coating. 5-micron nominal film thickness.



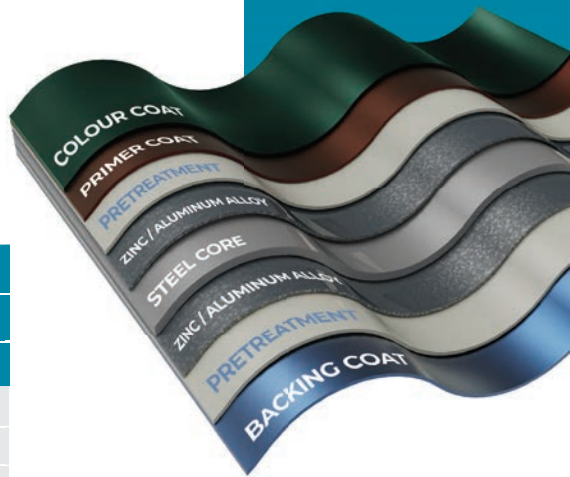
# UltraZen®

**UltraZen®** provides colour options with additional durability, thanks to the combination of an extra thick 200 gsm coating of zinc aluminium alloy, in combination with our advanced protective paint system. It is the recommended product for locations closer to the coast.

Category		UltraZen (AZ200)		
		Residential & Commercial		
		Perforation	Paint	Maintenance
Mild ISO C1-2	Roof	50 Years	18 Years	Rain Washing
	Wall Cladding	30 Years	15 Years	Manual washing every 6 months
	Accessories	15 Years	10 Years	Manual washing every 6 months
Moderate ISO C3	Roof	35 Years	18 Years	Rain Washing
	Wall Cladding	20 Years	15 Years	Manual washing every 12 months
	Accessories	15 Years	10 Years	Manual washing every 6 months
Severe ISO C4	Roof	20 Years	15 Years	Rain Washing
	Wall Cladding	15 Years	15 Years	Manual washing every 6 months
	Accessories	15 Years	10 Years	Manual washing every 3 months
Very Severe ISO C5	Roof	15 Years	15 Years	Rain Washing
	Wall Cladding	15 Years	15 Years	Manual washing every 3 months
	Accessories	15 Years	10 Years	Manual washing every month

**Technical:**  
UniSteel® UltraZen® conforms to AS/NZS2782:2013.  
Suitable for ISO9223:2012 Atmospheric Classifications C1 to C5.  
Refer to UniSteel® Warranty & Maintenance Guide for full details.

**Substrate:**  
Hot dipped 55% aluminium/zinc alloy coated steel coil.  
AZ200 coating with 200 g/m2 coating weight.  
Manufactured to AS1397:2011.



**Pre-treatment:**  
Corrosion resistant conversion coating.  
**Primer:**  
Corrosion resistant epoxy/polyester primer. 5-micron nominal film thickness.  
**Finish Coat:**  
Flexible exterior Super Advanced Durable Polyester coating. 20-micron nominal film thickness.  
**Backing Coat:**  
Standard grey epoxy service coating. 5-micron nominal film thickness.



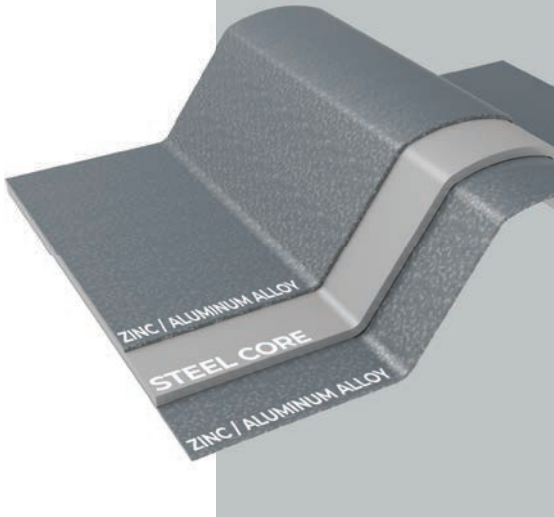




# Zenium®

Zenium® uses the best quality high tensile steel, with an extra thick 150 gsm coating of protective zinc-aluminium alloy, providing a durable metallic finish.

Category		Zenium (AZ150)		
		Residential & Commercial		
		Perforation	Paint	Maintenance
Mild ISO C1-2	Roof	20 Years	N/A	Rain Washing
	Wall Cladding	20 Years	N/A	Manual washing every 6 months
	Accesories	15 Years	N/A	Manual washing every 6 months
Moderate ISO C3	Roof	15 Years	N/A	Rain Washing
	Wall Cladding	15 Years	N/A	Manual washing every 6 months
	Accesories	10 Years	N/A	Manual washing every 3 months



**Technical:**  
UniSteel® Zenium® conforms to AS1397:2011.  
UniSteel Zenium® is suitable for ISO9223:2012  
Atmospheric  
Classifications C1 to C3  
Refer to UniSteel® Warranty & Maintenance Guide for full details.

**Passivation:**  
Corrosion resistant conversion coating.

**Substrate:**  
Hot dipped 55% aluminium/zinc alloy coated steel coil.  
AZ150 coating with 150 g/m2 coating weight.  
Manufactured to AS1397:2011.  
Finely spangled metallic finish.

**Surface Treatment:**  
Resin anti-fingerprint coating (both sides).



## Colour Finishes

Our wide range of colours draw from the natural palette of Aotearoa. Whether you're after bold contrast or a softer blend with the land, we make it easy to find the perfect finish to complement your build and your environment.





Your colour choice should feel like it belongs — to your home, your landscape, and your lifestyle.

At UniSteel®, we believe colour isn't just about looks — it's about how your space feels. Whether you're nestled in native bush, looking out over open farmland, or close to the coast, the right colour brings it all together.

# Where Local Landscapes Meet Lasting Colours...

Zinc-Alu	Cloud	Titania	Desert Sand
Gull Grey	Sandstone Grey	Lichen	Mist Green
Thunder Grey	New Denim Blue	Grey Friars	Windsor Grey
Permanent Green	Ironsand	Nightfall™	Slate
Karaka	Ebony		







UniSteel®

**HEADOFFICE**

Phone: 07 847 0204

Enquiries: [sales@unisteel.co.nz](mailto:sales@unisteel.co.nz)

Address: 2 Evolution Drive, Horotiu 3288, Hamilton

[unisteel.co.nz](http://unisteel.co.nz)